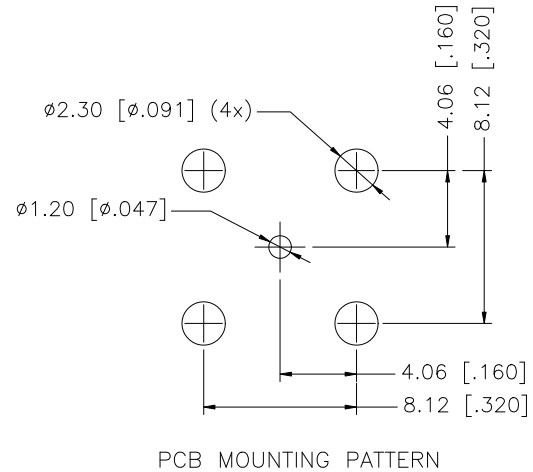
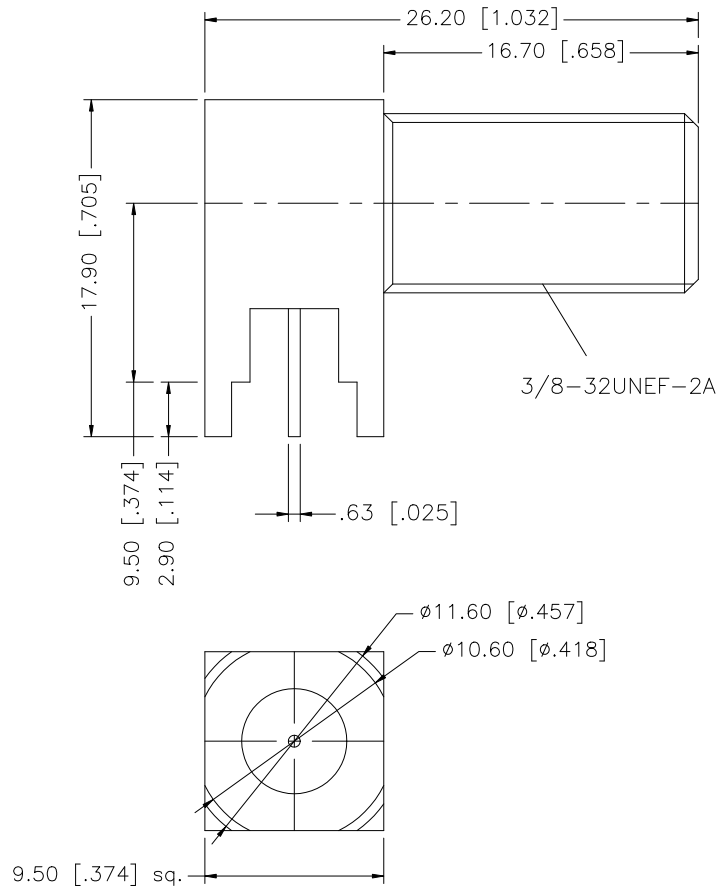


REV.	DATE	ECR NO.	DESCRIPTION
A	09/22/99	-	ADD REFERANCE NO. 51-0838
B	05/14/06	-	MODIFY BODY AND CONTACT PLATING TO BRT. TIN
C	05/20/08	-	REVISE BODY PLATING TO NICKEL, CONTACT PLATING TO MATTE TIN



NOTE:

- BRIGHT TIN PL. 200 MIN. THICK OVER NICKEL PL. 50 MIN. THICK OVER COPPER PL. 100 MIN. THICK.
- REF: 51-0838

				UNLESS OTHERWISE SPECIFIED DIMENSIONS ARE IN MILLIMETERS. DIMENSIONS IN [] ARE IN INCHES AND FOR CUSTOMER REFERENCE ONLY.	APPROVALS	DATE	Amphenol Connex					
8					DRAWN	G.R.S.					05/20/08	PART DESCRIPTION F SERIES R/A P.C. MOUNT RECEPTACLE
7					CHECKED			PART NO. 222131				
6					ISSUED							DWG. NO. 222131.DWG REV. C SIZE A SCALE NA
5					SHEET	1 OF 1						
4	INSULATOR	DELTRIN	NATURAL	1	CAD FILE		C:/222/222131.DWG					
3	CONTACT PIN	BRASS	MATTE TIN	2								
2	INSULATOR	P.P.	NATURAL	1								
1	HOUSING/BODY	BRASS	NICKEL	1								
DESCRIPTION				MATERIAL	FINISH	QTY	DO NOT SCALE DRAWING					

UNLESS OTHERWISE SPECIFIED DIMENSIONS ARE IN MILLIMETERS. DIMENSIONS IN [] ARE IN INCHES AND FOR CUSTOMER REFERENCE ONLY.

UNLESS OTHERWISE SPECIFIED TOLERANCES FOR MILLIMETERS ARE:
0.5 - 8mm ± 0.20mm
8 - 30mm ± 0.40mm
30 - 120mm ± 0.50mm

UNLESS OTHERWISE SPECIFIED TOLERANCES FOR INCHES ARE:
.020 - .315 = ± 0.007"
.315 - 1.180 = ± 0.015"
1.180 - 4.724 = ± 0.020"